



A WORLD OF  
**OPPORTUNITIES**

THE NEW REALITY OF ULTRASOUND IMAGING DEEPENING DIAGNOSIS

**ARIETTA™  
850**

**DeepInsight™  
ULTRASOUND  
SYSTEM**

- AI empowers deep learning know-how
- New levels of visualization with outstanding image accuracy
- Reproducibility and efficiency for stress free examinations



**FUJIFILM**  
Value from Innovation

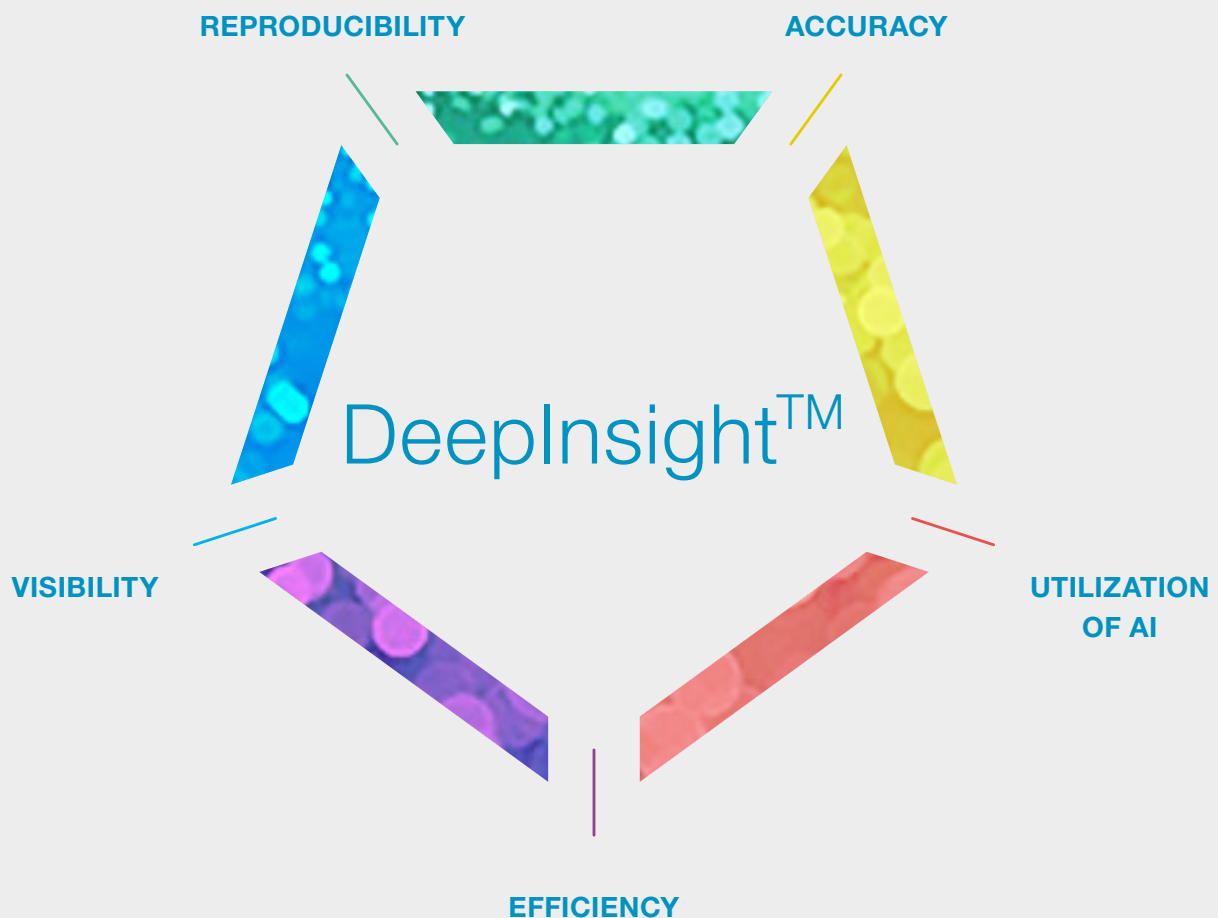


PREMIUM  
ULTRASOUND  
IMAGING



# REDEFINING THE WAY YOU SEE **DeepInsight™ Technology**

Fujifilm Healthcare has been at the forefront of technology and product developments throughout their history and since the birth of diagnostic ultrasound imaging. Fujifilm Healthcare's vision for the future of ultrasound is the DeepInsight™ Technology. It represents our confidence in delivering outstanding image quality and the commitment to continue to innovate in order to reach the highest imaging standards. Fujifilm Healthcare also believes that innovative concepts are required to foster premium ultrasound imaging.



# ARIETTA™ 850 DEEPIINSIGHT™ ULTRASOUND SYSTEM **REDEFINING THE WAY YOU SEE**

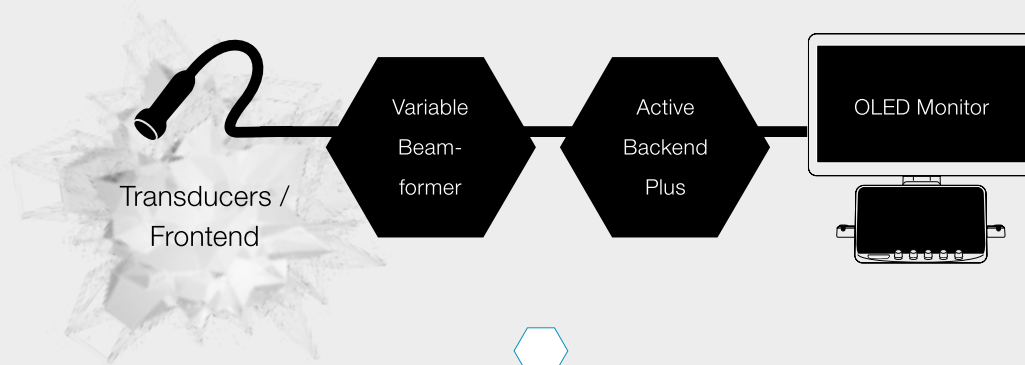


## **PURE IMAGE**

Further refinement of technologies harnessing high quality “sound” gives rise to our highest premium class performance yet.



## **PURE SYMPHONIC ARCHITECTURE**



## **SEAMLESS WORKFLOW**

Designed with sophisticated ergonomics and multiple new tools that streamline your workflow.



## **YOUR APPLICATION**

An extensive variety of unique applications that deliver new clinical value are accessible across all specialties.



# SENSE AND VISUALIZE **ULTRASOUND**

The new reality of ultrasound imaging  
deepening diagnosis

IMAGE QUALITY  
WORKFLOW  
APPLICATIONS

**DEEPINSIGHT™ TECHNOLOGY** Powered by **REILI**

**DeepInsight™** technology utilizes an Artificial Intelligence (AI) technology which only extracts the necessary information to provide an unprecedented, highly accurate image quality.

**eFOCUSING PLUS**

Combined with the new **eFocusing Plus** technology, the **ARIETTA™ 850 DeepInsight™ ultrasound system** achieves new levels of sensitivity, penetration, contrast and spatial resolution.

**CARVING IMAGING**

Additionally, the advanced image processing technology **Carving Imaging** delivers imaging results with less patient dependency.



# YOUR ULTRASOUND PREMIUM SYSTEM

The ARIETTA™ 850 DeepInsight™ Ultrasound System has unique and advanced applications that quickly provide diagnostic information keeping it one step ahead of the market

Liver disease  
assessment  
solutions

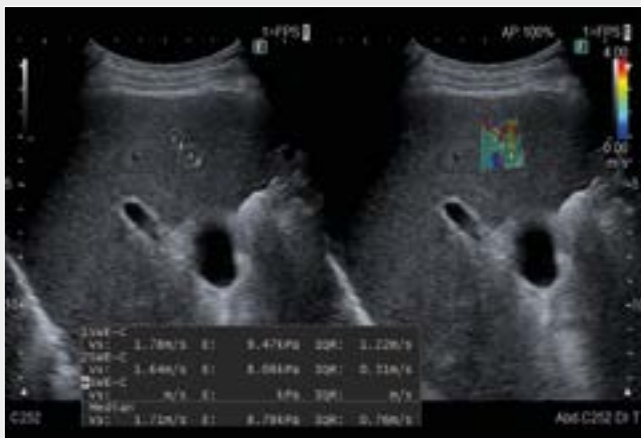


Powerful technologies for confident evaluation of diffuse liver diseases such as steatosis and fibrosis.

Interventional  
Radiology  
Solutions



Real-time comparison between ultrasound and other imaging modalities for safer and more accurate interventional procedures.



Cardiology solutions

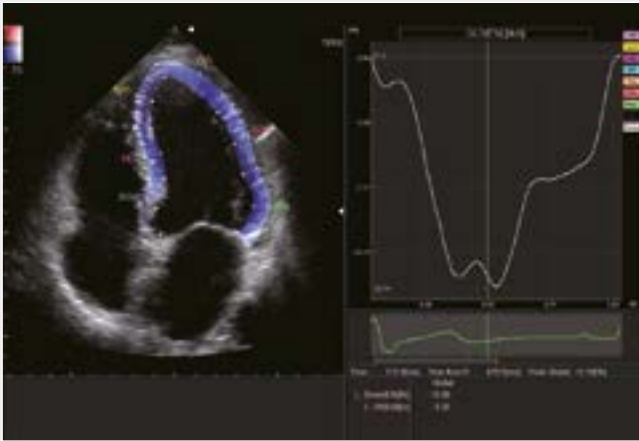


Unique analytics package, for cardiac assessments in daily practice.

Obstetrics solutions



Advanced technologies from early diagnosis, to follow-up and detection of fetal and women's health.



# YOUR ULTRASOUND **PREMIUM SYSTEM**

Vascular  
solutions

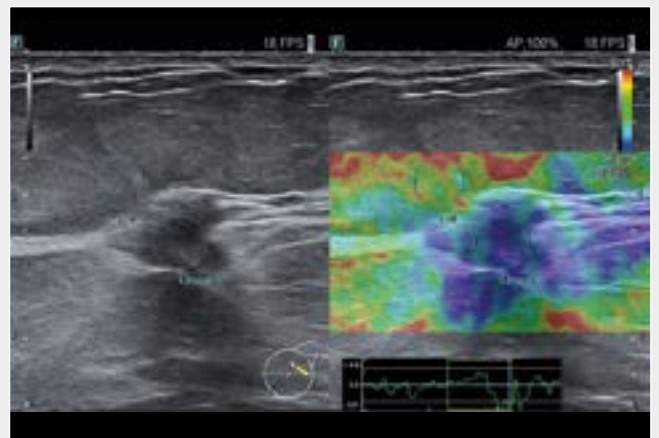
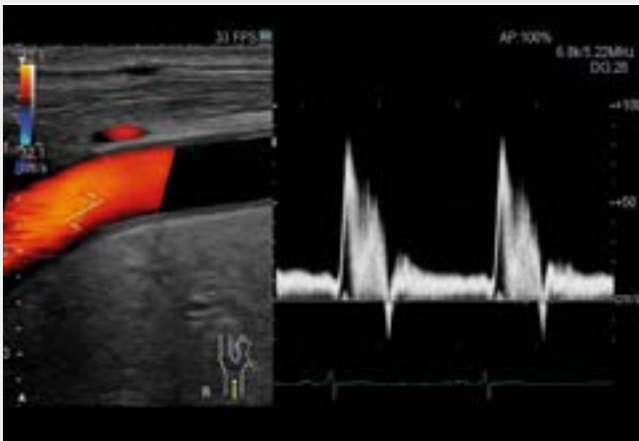


Early detection of lesions by depicting tumor vascularisation or vessel blood flow with an expert colour mode.

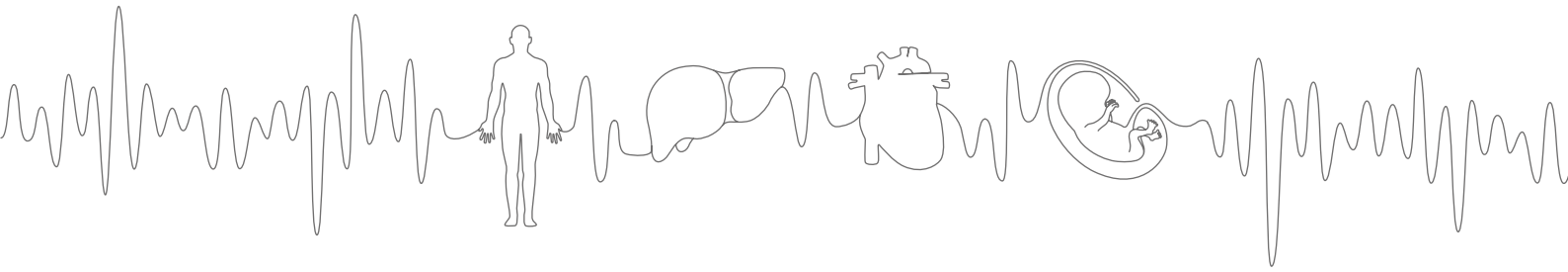
Women's Health  
solutions



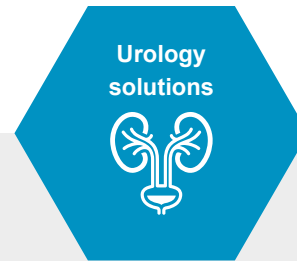
Spotting and characterising tissue abnormalities at an early stage for confident diagnosis and guidance during breast biopsy.



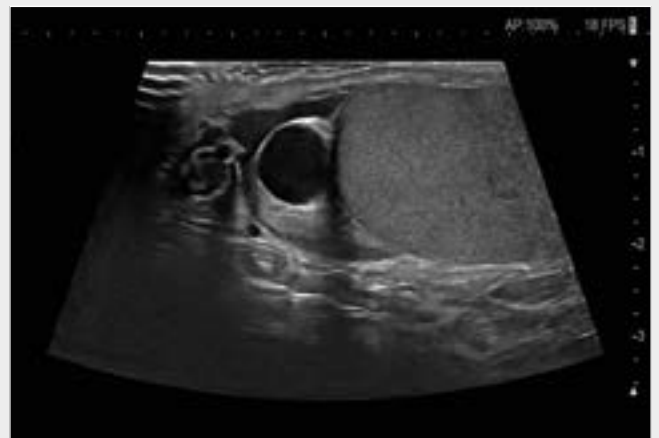
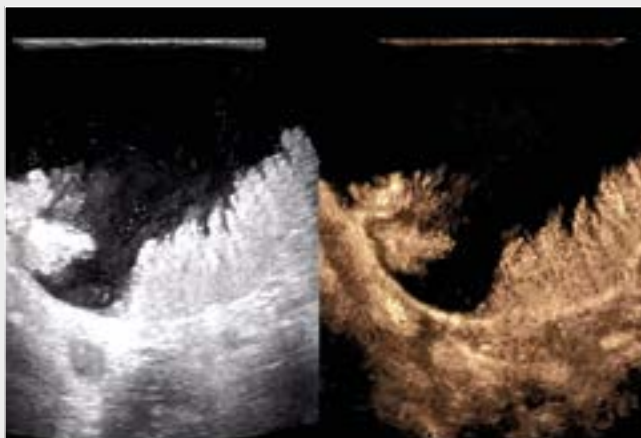
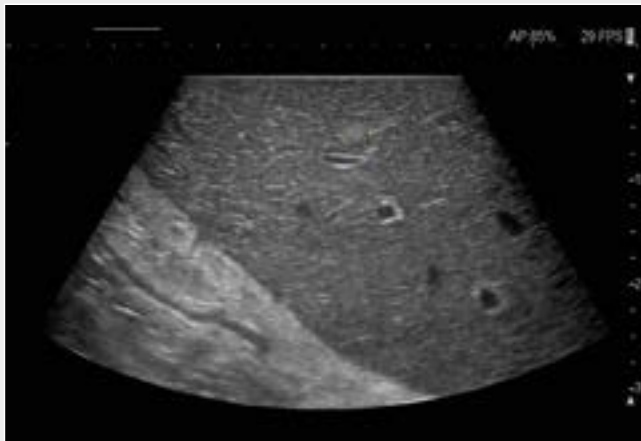




Combining highest image quality with dedicated intraoperative probes and imaging features for reliable guidance.



Confident urinary examinations, prostate biopsies and minimally invasive procedures for safer diagnosis, treatment and follow-up.

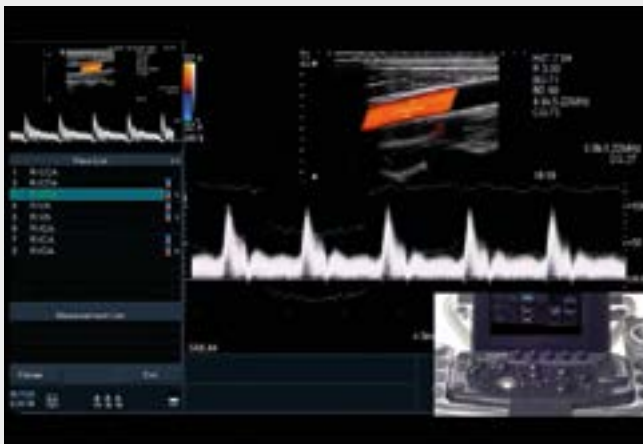




# SEAMLESS WORKFLOW

## EFFICIENT EXAMINATION

Pre-existing examination protocols and imaging conditions can be programmed. Button operations can be reduced significantly to support efficient examinations. Additionally, a reference image can be displayed via the Guide View function.



### PROTOCOL ASSISTANT guides you through your examination

Now you can establish standardised scanning protocols for various types of examinations – thus ensuring that all operators are on the same page. Our Protocol Assistant guides you through a series of defined steps, detecting any omissions or potential mistakes. You can even automatically derive the same imaging parameters simply by clicking on a reference image. So why wait? Start increasing efficiency and accuracy today.



### Consistent PATIENT MANAGEMENT with automatic measurement reports

Because reporting is such an important and complex aspect of an ultrasound examination, we made sure that all our solutions do it automatically – by transferring all measurement results into a standardized report. With just one click you can easily track and manage your patient's history; share the report in multiple formats on various devices; or import it into third-party reporting platforms.



### Improve posture (and productivity) with the COMFORTABLE SOLUTION

Many sonographers suffer from work-related musculoskeletal disorders due to the unnatural posture required for a long day of scanning. Our platforms are designed with the latest ergonomic standards in mind: with large monitors, 360° flexible arms, and adjustable operator panels. You can customise your work environment according to your needs and examination type – thus ensuring a healthy posture with less fatigue and injuries.





PREMIUM  
ULTRASOUND  
IMAGING

AI/Deep Learning assistance function



DICOM support function



**Manufactured and distributed by**  
FUJIFILM Healthcare Corporation  
2-1 Shintoyofuta, Kashiwa-shi, Chiba, 277-0804, Japan  
[www.fujifilm.com/fhc/en](http://www.fujifilm.com/fhc/en)

**Distributor for Europe**  
FUJIFILM Healthcare Europe Holding AG  
Sumpfstrasse 13, 6312 Steinhausen, Switzerland

© 2022 FUJIFILM Healthcare Europe Holding AG

- This brochure may contain descriptions of optional functions and products.
- Specifications and appearance may be subject to change for improvement without notice.
- For proper use of the system, be sure to read the operating manual prior to placing it into service.



ARIETTA, DeepInsight, eFocusing, Carving Imaging are registered trademarks or trademarks of FUJIFILM Healthcare Corporation in Japan and other countries. ARIETTA™ DeepInsight™ is one of the ARIETTA™ series.